

# ST. CHARLES

Tea Cart



MADE FOR GENERATIONS

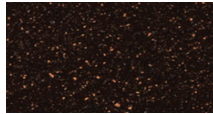
Item Number: #26-PTC  
Material: Wrought Iron & Porcelain Tiles  
Dimensions: W38.75" D18" H34"  
Weight: 76 lbs.  
Warranty: (Retail) Limited 20 Year Structural (frame)  
Limited 5 Year Finish  
Limited 2 Year Cushion  
Limited 2 year Component Parts  
Features: -Wrought iron  
-Super-Polyester powder coating  
-UV Resistant  
-Iron feet hold glides and protect frame from surface



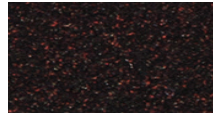
## Finishes:



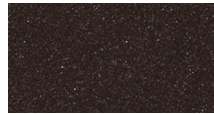
SP40 Copper Canyon



SP42 Espresso



SP11 Rosewood



SP22 Sable



PG50 Metallic Cinnamon



SP18 Dark Bronze



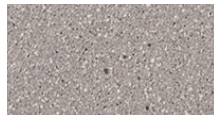
SP08 Textured Black



SP21 Graphite



TC70 Alpine Silver



TC20 Sandalwood



SW40 Driftwood



TC75 Oxford White

